

A. Keywords:

Formal elements Line, Tone, Colour, Pattern, Shape, Texture and Form.

Line Line is the path left by a moving point. For example, a pencil or a brush dipped in paint. A line can be horizontal, diagonal or curved and can also change length.

Shape A shape is an area enclosed by a line. It could be just an outline or it could be shaded in. Shapes can be **geometric** or **irregular**.

Tone This refers to the lightness or darkness of something. This could be a shade or how dark or light a colour appears.

Pattern A design that is created by repeating lines, shapes, tones or colours.

Media The material used to create artwork.

Composition This is the way an object is placed or positioned on a page.

Technique The way tools and media are used to create artwork.

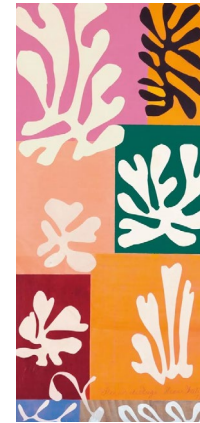
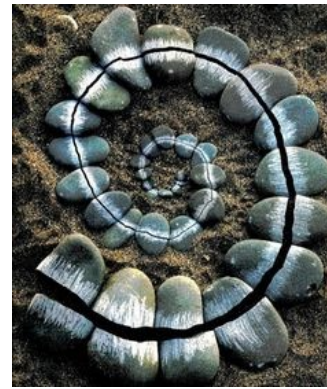
B. Key Knowledge 1: Natural Forms

Natural Form The natural form of an object which has not been altered or manipulated, but is in its' original form found in nature. Through Art, natural form can be depicted as a representation of the original object.

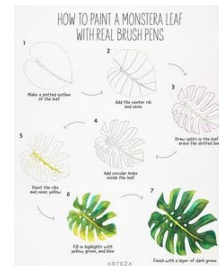
Angie Lewin- studied BA(Hons) Fine Art Printmaking at Central St. Martins College of Art and Design between 1983 and 1986, followed by a year's part-time postgraduate printmaking at Camberwell School of Arts and Crafts.

After working in London as an illustrator I studied horticulture and a move to Norfolk prompted a return to printmaking.

E. Image



F. Expert Modelling: Leaves



Subject: Art

Topic: Natural Forms

C. Key Knowledge 2: Tone and Texture



Hue
Tint
Tone
Shade

D. Key Knowledge 3: Key words

Print
Observation
Balance
Mark making
Smooth
Texture
Tone
Form

G. Wider thinking / further reading:

<https://www.youtube.com/watch?v=891kLZYPshg>
<https://www.angielewin.co.uk/>